



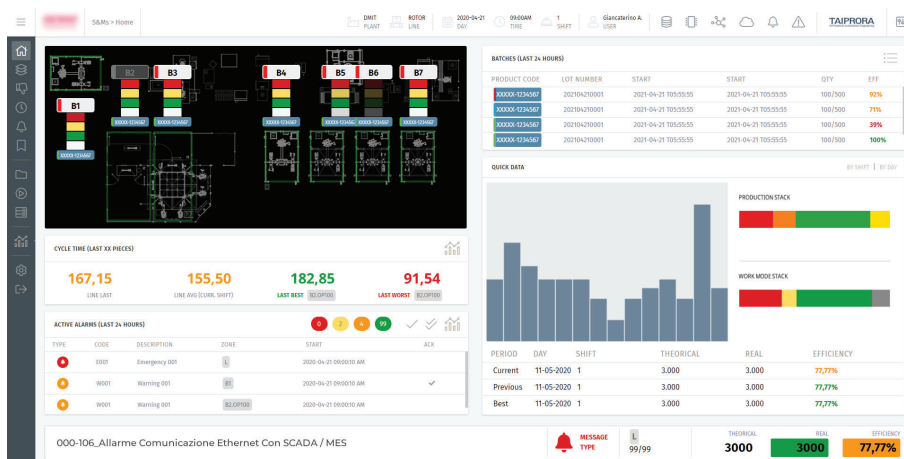
Scada & MES System Taiprora Web platform

Web platform for real-time Data Management and Traceability, designed and developed by Taiprora for an Automotive corporate. Developed with **Wonderware System Platform**.

General Information

The customer is a third-party manufacturer in Automotive sector. Its production is divided into 3 Production lines, 120 Work Stations, and where an average of 43,200 pieces are processed every day.

This software is also fully connected to the customer's MES System.



ADVANTAGES WITH THIS SOLUTION

- ✓ High efficiency and reliability
- ✓ Business Intelligence tool
- ✓ Responsive, adaptive, touch-friendly mobile user interface
- ✓ High Performance
- ✓ All Items Dashboard

FIND OUT MORE WITH DEDICATED VIDEOS

Follow the link or scan the QRCode to open the video related to this project on Youtube:



<https://youtu.be/QeL8jiejQC0>

Follow **Taiprora** on:  

REAL-TIME VIEWS & REPORTING ABOUT:

- Production progress
- Info and measurements of each workstation
- Monitoring of scraps, reworks and finished products
- Alarms and downtimes
- Efficiency index (OEE)
- Process capability (CP, CPK)
- Traceability & Quality Check

DIGITALIZATION & INDUSTRY 4.0 ENABLING TECHNOLOGIES:

- Advanced HMI / Andon
- Edge computing
- IIoT
- Cloud computing
- Broker Mqtt
- Business intelligence



TAIPRORA
Software & Automation Engineering

Smart Solutions for Smart Factories
AMH • Software • Automation Systems

www.taiprora.it

