

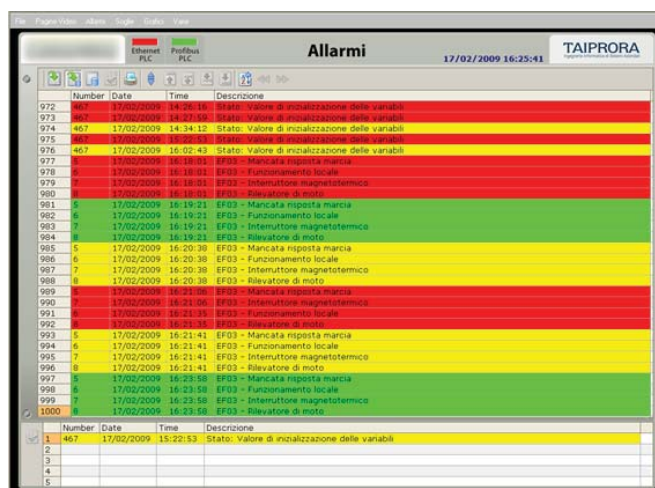
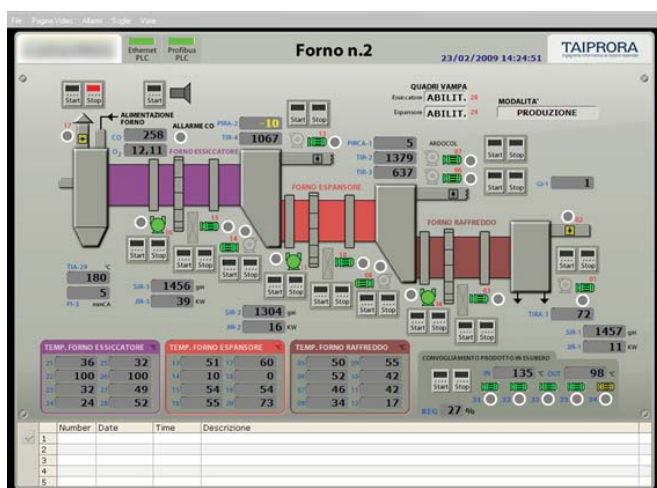
SCADA manufacturing plant

Plant description

The central unit manages three ovens (drying oven, stove and oven expander cooling) of line 2 and command that all utilities that run the line of the furnace 2 as: tail, lubricators, fans, valves and the recovery plant product made redundant, in addition, through two modules to sixteen analog inputs, detects all the measures temperature and pressure of the furnace area and, through a form on the eight outputs analog, regulates motor speed inverter equipped (oven cools, expander oven, oven drying, drugstore tail, carpet supply an oven, oven 2 and mat feed pump cooling produced in excess).

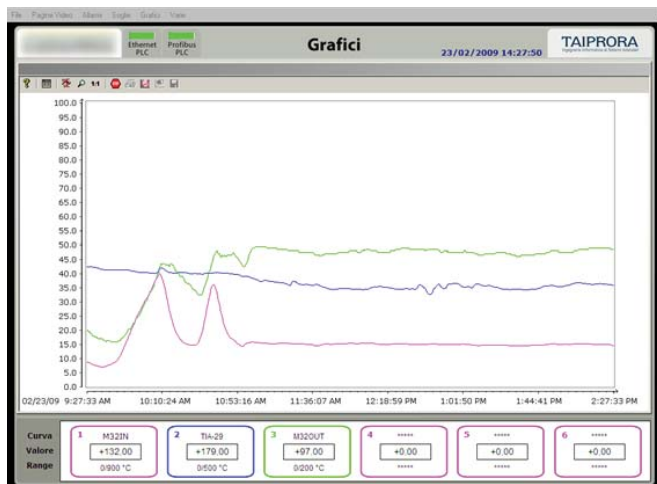
The first device consists of two suburbs et200 networked profibus central unit and manages the conveyor belts that carried the caissons in clay feeding the furnaces 1 and 2.

Device 2 also consists of two suburbs et200, too, connected profibus network in main unit and manages where connected to high voltage power supplies, the domes, the batsmen and augers dust collection, in addition, through four modules to eight analog inputs, detects all the measures temperature and pressure of the electrostatic area.



(above) this page lets you control the users of the oven, recovery of excess material and to prepare the system in glow - production - auto start, in addition, view al analog values on the oven

(above) by choosing the appropriate option for the page is accessed and alarms, function buttons located under the logo company, you see the historical alarms. The red background shows in columns date and time where the alarm occurred while the green background indicates when it was silenced and the yellow background that in which returned.



(left) this page displays the selected sizes and represents a percentage of their scales. Through buttons you can set the length of the track, stop display (without stopping the acquisition), do a zoom, scroll through the tracks, use a ruler to see the percentages along the tracks, etc.. At the bottom of the screen displays graphics and information on sizes, namely:

- the color of the track with the beading;
- the name of " curve";
- the "value" flash' track'
- the range of the track to calculate the appropriate percentage chart