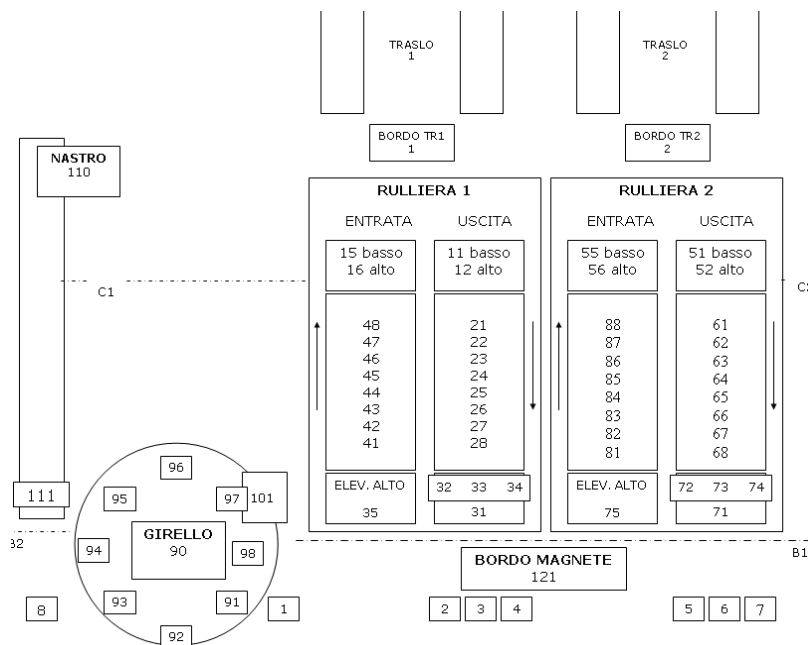


## Revamping PC / PLC metal extrusion plant

Heavy Industry  
Part 1/2

Construction of second floor in compliance with the regulations in production environments.

- planning for construction second floor (tai design consulting)
- carpenter square (square head and management rollers)
- development and commissioning of control and supervision software master data configuration (trays, articles, plant)
- interface between pc monitor and erp system on as400
- software for interfacing with pc monitoring and control
- revamping management framework plc
- wiring connection network between plc and pc ethernet network
- commissioning placements translator
- management rollers second floor
- handling with new sensors bays of deposit second floor
- synoptic system that allows the state to supervise the installation
- alarm management field (ability to configure the alarm types with an advanced management registry)
- management priorities and missions possibility of manual operations
- monitoring activities of the plant
- system configuration (enable disable parts of the system - ability to configure shares of locations to send to the translator with the capability to interpolation)
- save the map and restore in case of malfunction of the system



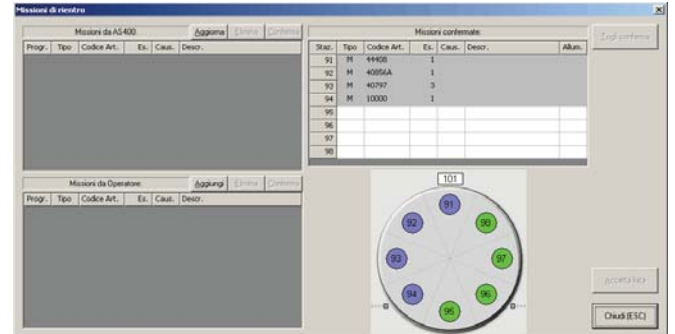
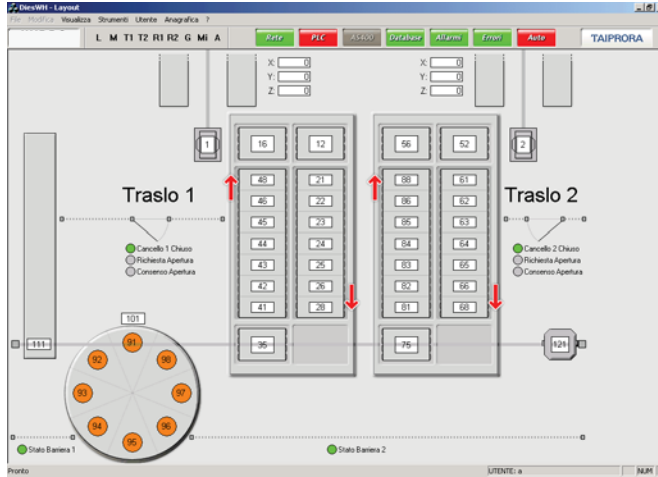
Plant Map



# Revamping PC / PLC metal extrusion plant

Heavy Industry  
Part 2/2

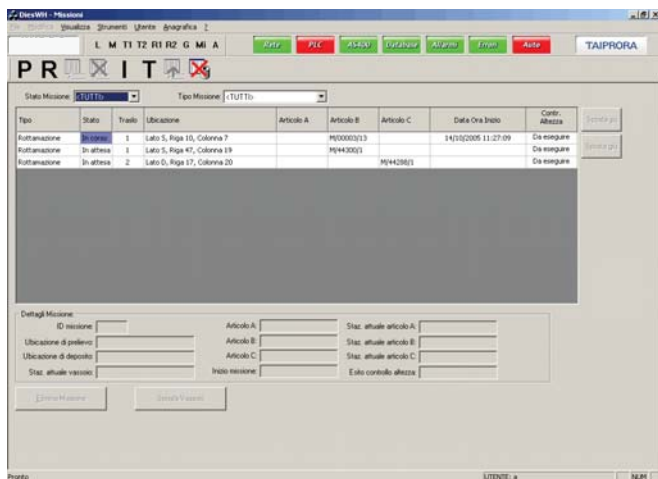
## User interface



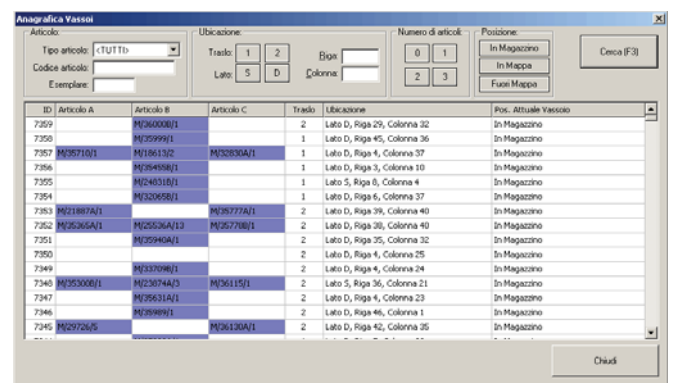
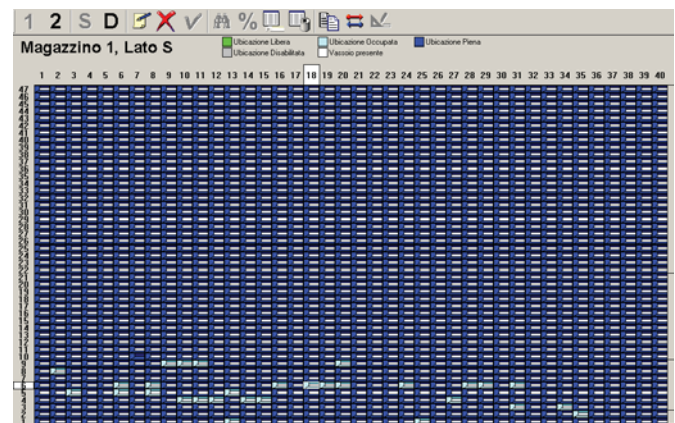
above: Plant detail

left: Main Supervisor

below Warehouse configuration (schema)



above: Warehouse Configuration (detail)



right: trays registry

## System Supervisor Functionalities

- Synoptic of system that allows to supervise the system status
- Field alarm management (possibility to configure the types of alarms with an advanced registry management system)
- Management of priority missions and possibility of carrying out manual operations
- Monitoring of the activity of the plant
- System configuration (enable disabling system parts - possibility to configure the positions of the locations to be sent to the translation with interpolation functionality)
- Save map and restore in case of system anomaly
- Management of articles / trays registry with dimensional characteristics